

Quick Start Guide BeamView-USB™ With LaserCam-HR™



This guide explains how to install the BeamView-USB™ software. For detailed information about the LaserCam-HR™ camera, refer to the *LaserCam-HR User Manual (1126917)*.

For instructions on how to connect additional LaserCam-HR cameras to USB 2.0 PC ports, refer to either the *LaserCam-HR User Manual (1126917)*, or the *BeamView-USB software Help file*.



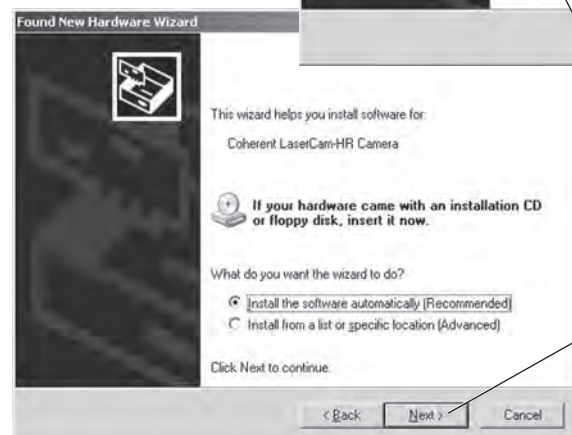
Do not connect a LaserCam-HR camera to a USB 2.0 PC port at this time. The software must be installed *before* physically connecting a camera to the computer.

Unpacking

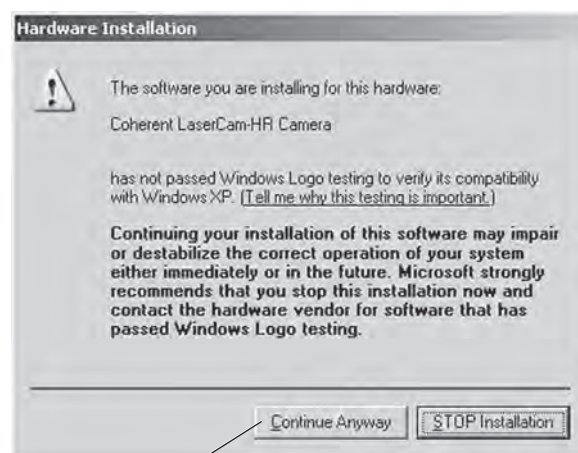
The LaserCam-HR is a digital CMOS camera, designed for use with a USB 2.0 interface. The camera, trigger cable, rotational camera mount, and CD-ROM are shipped in a high-density plastic carrying case. This specially-designed case protects all items during shipment.



9 Select this radio button and then click "Next."



10 Click "Next" on this screen.



11 Click "Continue Anyway" on this screen.



12 Click "Finish" to complete the LaserCam-HR installation.

If you are asked to reboot, do so at this time to complete the installation process. If rebooting is not required, installation is now complete.

Contact Information

USA
Phone: 1.800.343.4912
Fax: 503.454.5777
E-Mail: info_service@Coherent.com
Europe
Phone: +49-6071-968-0
Fax: +49-6071-968-499
E-Mail: info_service@Coherent.com
International
Phone: 503.454.5700
Fax: 503.454.5777
E-Mail: info_service@Coherent.com

For the latest Customer Service information, refer to our website: www.Coherent.com.

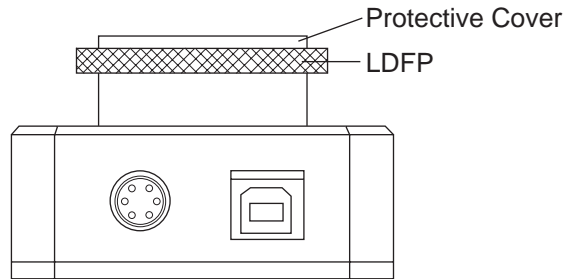
Coherent and the Coherent Logo are registered trademarks of Coherent, Inc. BeamView-USB and LaserCam-HR are trademarks of Coherent, Inc.

BeamView-USB™ With LaserCam-HR™ Quick Start Guide
© Coherent, Inc. 11/2009. Printed in the U.S.A.
Part No. 1086147, Rev. AE

Visually check all cartons for damage before unpacking. If there is no visible external damage, remove all items from the cartons and inspect them for damage. Immediately advise Coherent of any damage. A Returned Material Authorization (RMA) will be issued for any damaged instruments (refer to the last page of this guide for contact information).



When inspecting a LaserCam-HR camera, remove only the protective cover, *not* the LDFP (Low Distortion Faceplate). See the following figure.



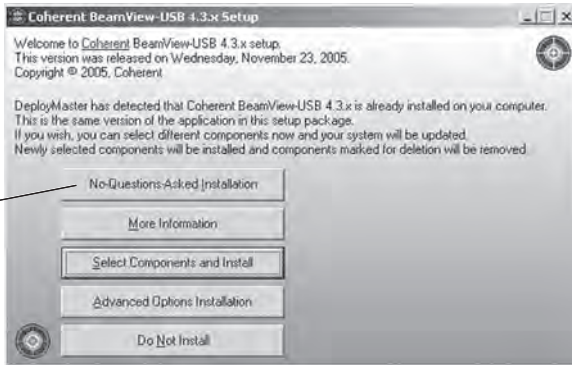
Software Installation



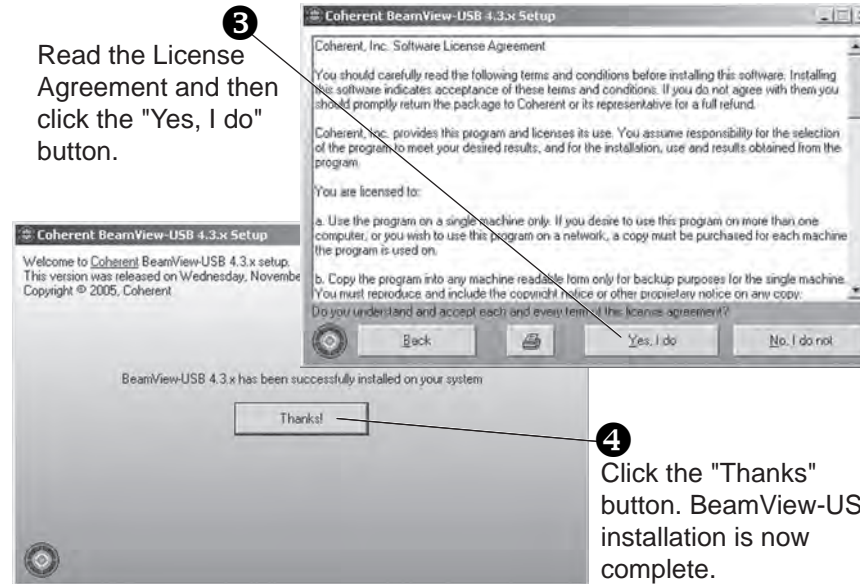
Do not connect a LaserCam-HR camera to the USB 2.0 PC port before starting the following installation.

1 Insert the BeamView-USB CD into your CD-ROM drive. If Autorun is enabled on your system, installation will start automatically; otherwise, select Run from the Start menu and then type **D:\Setup** (substitute the appropriate letter of your CD-ROM drive for D).

2 Click the "No-Questions-Asked Installation" button.



3 Read the License Agreement and then click the "Yes, I do" button.



4 Click the "Thanks" button. BeamView-USB installation is now complete.

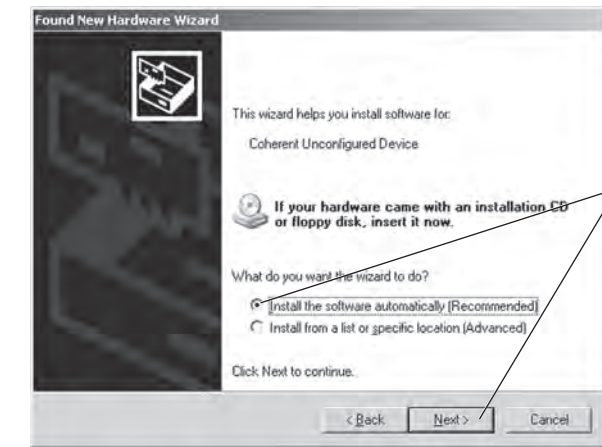
A shortcut to BeamView-USB will automatically be placed on the desktop. Do not click it at this time.



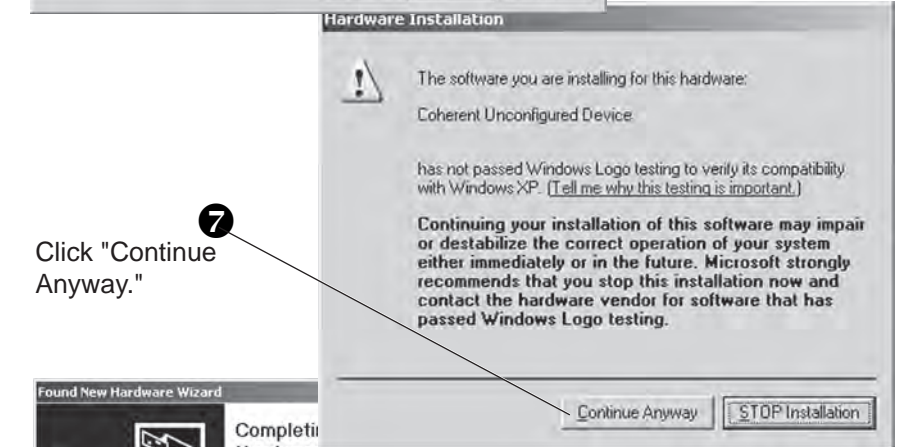
Connect a LaserCam-HR camera to the USB 2.0 PC port before continuing with the installation.



5 When the Found New Hardware Wizard appears, select "No, not at this time" and then click "Next."



6 Select this radio button and then click "Next."



7 Click "Continue Anyway."



8 Click "Finish" to close the Wizard.

Installing a LaserCam-HR camera requires the Found New Hardware Wizard to run twice—the next step is the beginning of the second cycle.