

*Software Installation and  
Quick Start Guide*

# *EnergyMax<sup>™</sup>-USB/RS* *Sensor System*





*Software Installation and Quick Start Guide*

*EnergyMax-USB/RS*  
*Sensor System*



27650 SW 95th Ave.  
Wilsonville, OR 97070

This document and software is copyrighted with all rights reserved. Under the copyright laws, this document and software may not be copied in whole or in part or reproduced in any other media without the express written permission of Coherent, Inc. Permitted copies must carry the same proprietary and copyright notices as were affixed to the original. This exception does not allow copies to be made for others, whether or not sold, but all the material purchased may be sold, given or loaned to another person. Under the law, copying includes translation into another language.

Coherent, the Coherent Logo, and EnergyMax are trademarks or registered trademarks of Coherent, Inc. All other trademarks or registered trademarks are the property of their respective owners.

Every effort has been made to ensure that the data given in this document and software is accurate. The information, figures, tables, specifications, part numbers, schematics and software contained herein are subject to change without notice. Coherent makes no warranty or representation, either expressed or implied with respect to this document and software. In no event will Coherent be liable for any direct, indirect, special, incidental or consequential damages resulting from any defects in its documentation.

# TABLE OF CONTENTS

Signal Words and Symbols in this Manual .....	iv
Signal Words in this Manual .....	iv
Symbols.....	v
Preface .....	v
Publication Updates.....	vi
Operating System Requirements .....	vi
Minimum PC Requirements .....	vi
<b>Software Installation.....</b>	<b>1</b>
Installing the EnergyMax PC Software.....	1
Manually Installing the EnergyMax Driver .....	2
<b>Quick Start .....</b>	<b>3</b>

## **Signal Words and Symbols in this Manual**

This documentation may contain sections in which particular hazards are defined or special attention is drawn to particular conditions. These sections are indicated with signal words in accordance with ANSI Z-535.6 and safety symbols (pictorial hazard alerts) in accordance with ANSI Z-535.3 and ISO 7010.

### **Signal Words in this Manual**

Two signal words are used in this documentation: **WARNING** and **NOTICE**.

The signal word **WARNING** designates the degree or level of hazard when there is the risk of injury:

---

#### **WARNING!**

**Indicates a hazardous situation that, if not avoided, could result in death or serious injury.**

---

The signal word “**NOTICE**” is used when there is risk of property damage.

---

#### **NOTICE!**

**Indicates information considered important, but not hazard-related.**

---

Messages relating to hazards that could result in both personal injury and property damage are considered safety messages and not property damage messages.

## Symbols

The signal word **WARNING** is always emphasized with a safety symbol that indicates a special hazard, regardless of the hazard level:



---

**This symbol is intended to alert the operator to the presence of exposure to hazardous visible and invisible laser radiation.**

---



---

**This symbol is intended to alert the operator to the presence of important operating and maintenance instructions.**

---

## Preface

This guide includes:

- Installation instructions for the EnergyMax PC software and driver—a program that provides an easy-to-use interface between a Coherent EnergyMax-RS or EnergyMax-USB meterless sensor, and a PC.
- A separate Quick Start section that explains how to connect an EnergyMax sensor to a PC and begin taking measurements within minutes.

---

**For detailed information on EnergyMax PC software and the EnergyMax-USB/RS sensor system, refer to the *EnergyMax-USB/RS Sensor System User Manual* (part number 1186243), available in Adobe® PDF format on the installation CD that shipped with your system.**

---

## **Publication Updates**

To view information that may have been added or changed since this publication went to print, connect to: [www.Coherent.com](http://www.Coherent.com).

## **Operating System Requirements**

EnergyMax PC software will run on the following Microsoft® operating systems:

- Windows 7® 32- or 64-bit
- Windows 8® 32- or 64-bit

## **Minimum PC Requirements**

- Processor (based on number of EnergyMax sensors used)
  - (1 sensor): Dual Core 2.0 GHz, 2 GB RAM
  - (2 sensors): Quad Core 2.5 GHz, 4 GB RAM
  - (more than 2 sensors): Quad Core 3.0 GHz, 4 GB RAM
- 60 MB of free hard disk space
- CD-ROM drive
- USB or RS-232 port
- 1024x768 screen resolution
- 256 colors



---

### ***NOTICE!***

**Operating EnergyMax PC software with a slower computer can cause the software to begin sampling laser pulses at a lower repetition rate versus analyzing every pulse.**

---



# SOFTWARE INSTALLATION

The installation process consists of installing the EnergyMax PC software and, if necessary, manually installing the EnergyMax driver.

These procedures are explained, next.

## Installing the EnergyMax PC Software



---

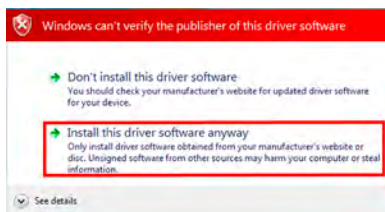
### **NOTICE!**

**Install the EnergyMax PC software and driver before physically connecting an EnergyMax sensor to the computer.**

---

- Step 1:** Insert the EnergyMax CD into your CD-ROM drive.
- Step 2:** Browse to your CD-ROM drive (typically, **D:**) and double-click *setup.exe*.
- Step 3:** Follow the on-screen instructions.

*Note:* If a window similar to the one shown below appears, click the “Install this driver software anyway” button to continue the installation.



- Step 4:** When the following screen appears, click the OK button to complete the software installation.



- Step 5:** Once the software is installed on your system, connect the EnergyMax sensor to a port on your computer. If you receive an error message that the EnergyMax driver cannot be found, manually install the driver by following the procedure explained below.

## ***Manually Installing the EnergyMax Driver***

---

**The following installation procedure is for USB sensors only.**

---

Normally the driver automatically installs during the EnergyMax PC software installation process. If for any reason that does not happen, use the following procedure to manually install the driver:

- Step 1:** Insert the EnergyMax CD into your CD-ROM drive.
- Step 2:** Browse to your CD-ROM drive (typically, **D:**) and navigate to the *driver* folder.
- Step 3:** Double-click the driver file to install the driver.

## QUICK START

This tutorial explains how to connect a EnergyMax-USB or EnergyMax-RS sensor to your PC and begin taking energy measurements using the EnergyMax PC software.



---

### **WARNING!**

**Follow all laser safety procedures. The laser must be switched OFF or shuttered before running the tutorial presented in this section.**

---



---

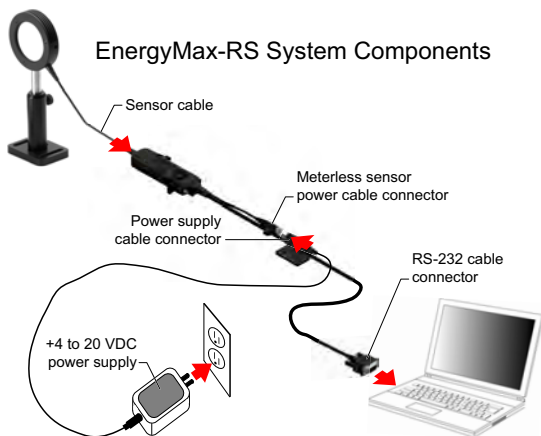
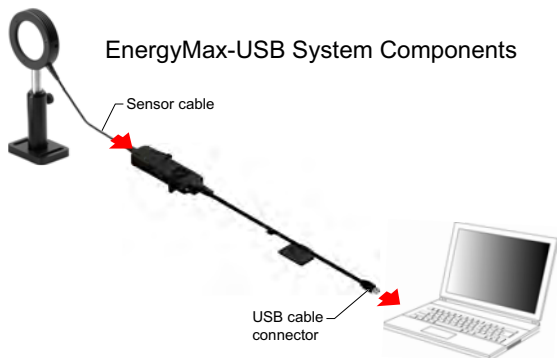
### **NOTICE!**

**For instructions on communicating with the sensor directly via host commands, refer to the “Host Interface” section of the *EnergyMax USB/RS User Manual* (1186243), available as a PDF file on the CD that shipped with your product.**

---

1. Install the EnergyMax PC software—for details, refer to “Installing the EnergyMax PC Software” (p. 1).

2. Connect the system components (the following figures show system components for both EnergyMax-USB and EnergyMax-RS sensors—select the one that's appropriate for your system).

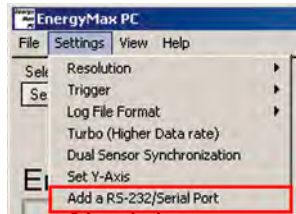


3. Confirm that the blue LED is lit.

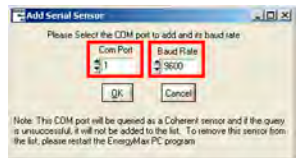


4. Start the EnergyMax PC software.

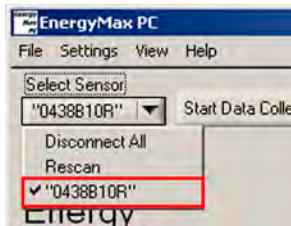
5. (*EnergyMax-RS sensors only*) Click *Add a RS-232/Serial Port* on the Setting dropdown menu.



6. (*EnergyMax-RS sensors only*) On the Add Serial Sensor menu, select the *Com Port* and *Baud Rate* parameters and then click the OK button.



7. Select the sensor serial number from the Select Sensor dropdown menu. In the example at right, the selected sensor is *0438B10R*.



8. Press the Start Data Collection button and then turn ON the laser to begin taking energy measurements.





*EnergyMax<sup>™</sup>-USB/RS Software Installation and  
Quick Start Guide*

*©Coherent, Inc., 3/2015 (RoHS), printed in the USA  
Part No. 1186241 Rev. AB*