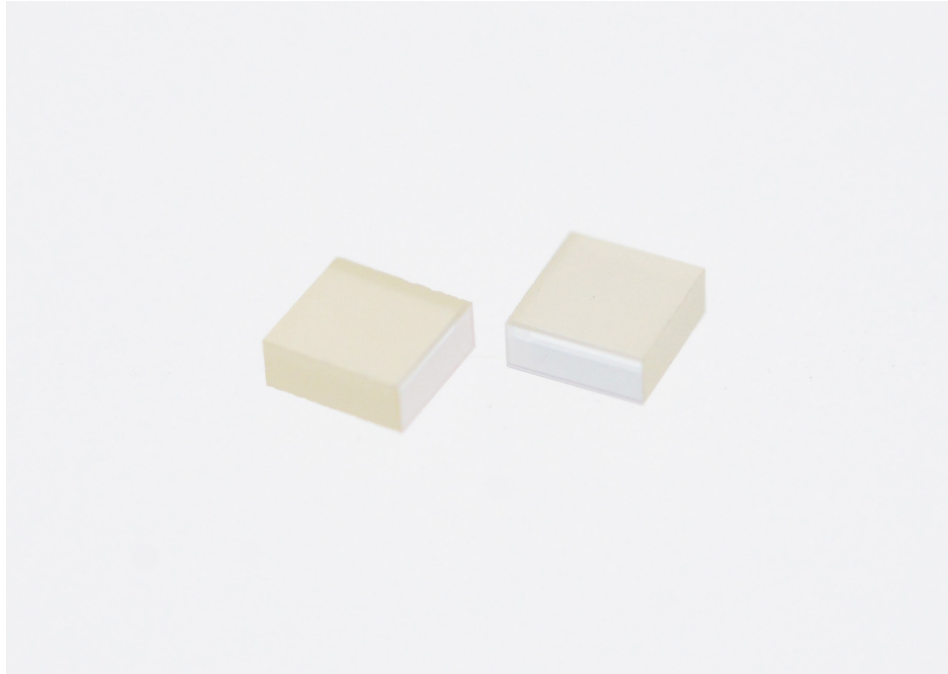


C-POLARIZER

The C-polarizer is composed of an YVO4 beam displacer and a $\lambda/2$ waveplate. The C-polarizer can split extraordinary from ordinary rays at a certain spacing when the angle of incidence is 0 degrees, and then rotate the polarization status of the two beams according to the customer's requirements with the $\lambda/2$ waveplate. Coherent offers C-polarizers with high polarization purity and epoxy-free in the optical path, simplifying the assembly process. C-polarizers are useful for circulators, interleavers, and DTE/DCE.



APPLICATIONS

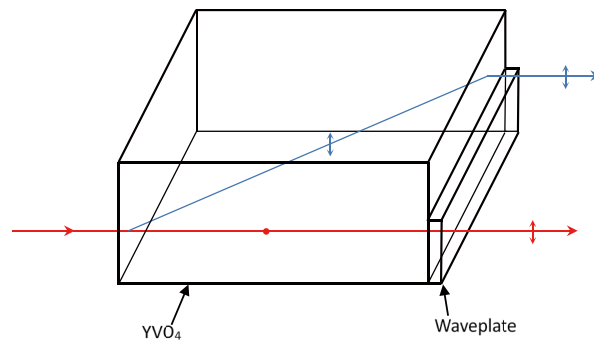
- Circulators
- DTE/DCE
- Interleavers
- 40G/100G components

Common Specifications

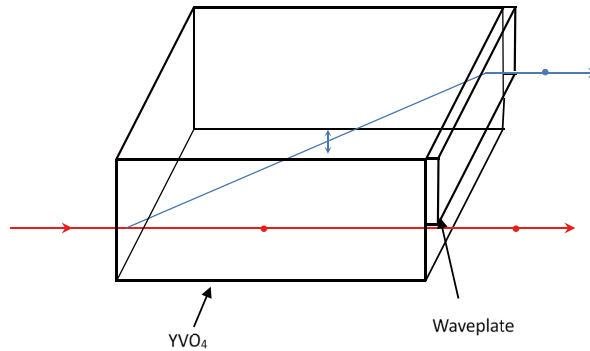
Material	YVO4& Crystal Quartz
Typical Dimension	2.6 x 2.6 x 7 mm
Beam Deviation	3 arc min
Flatness	$\lambda/10$ @632.8 nm
Extinction Ratio	> 1000:1
Surface Quality	(scratch/dig) better than 20-10
Wavelength Range	$\lambda_c \pm 20$ nm
AR Coating	$R < 0.20\%$ @ $\lambda_c \pm 40$ nm, $\lambda_c = 1310, 1550$ nm

Other sizes, diameters, and coatings are also available upon request.

Dimensions



Type 1: P Polarization



Type 2: S Polarization